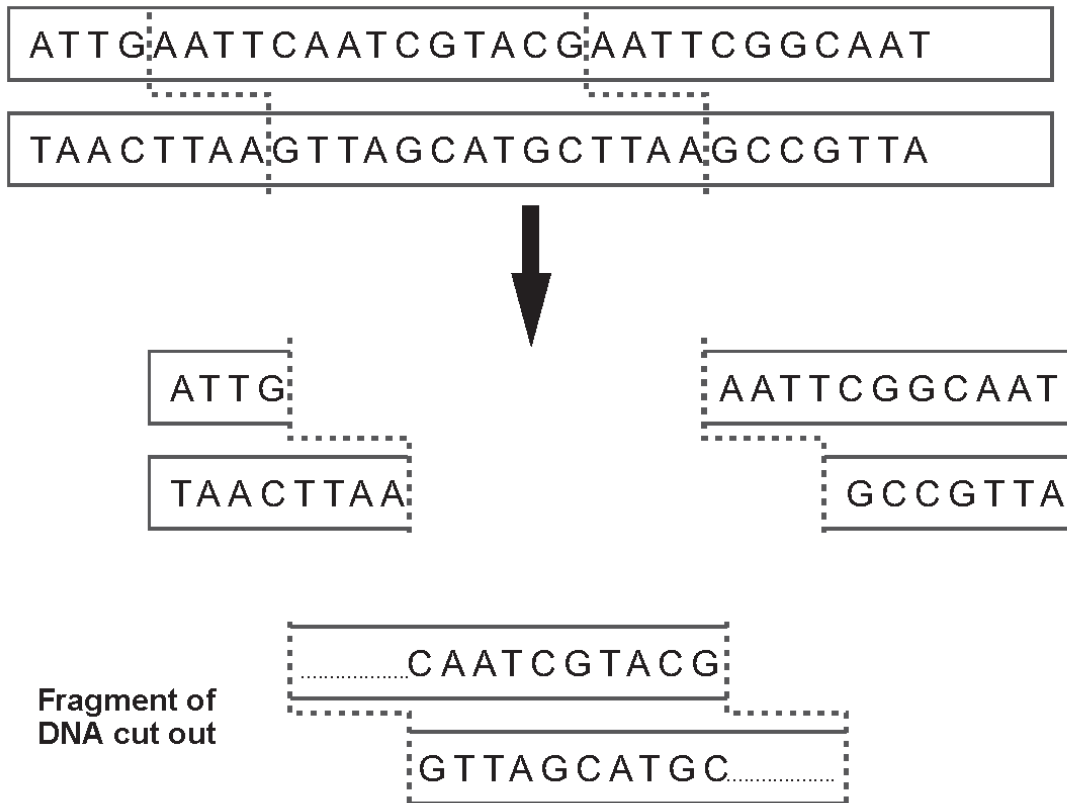


WJEC (Eduqas) Biology A-level
Topic 2.7: Application of
Reproduction and Genetics
Questions by Topic

2.

- (a) Restriction enzymes are essential tools of genetic engineering. A restriction enzyme cuts the double-stranded DNA molecule at its specific recognition site. The diagram below shows how one such enzyme would cut out a DNA fragment.



- (i) Draw in the bases which are missing from the ends of the fragment of DNA which has been cut out. [1]
- (ii) Explain why the parts completed in (i) are known as 'sticky ends'. [1]

.....

.....

- (iii) A number of different restriction enzymes are now available, some of which are shown in the table below:

Enzyme	Source	Recognition site
<i>EcoRI</i>	<i>Escherichia coli</i> RY 13	GAATTC
<i>BamHI</i>	<i>Bacillus amyloliquefaciens</i> H	GGATCC
<i>HindIII</i>	<i>Haemophilus influenzae</i> Rd	AAGCTT

Name the enzyme used in the example above.

[1]

.....

(b) In recombinant DNA technology, the piece of DNA which has been cut out is inserted into a plasmid which has been cut open using the same enzyme.

(i) Define the term 'plasmid'. [1]

.....

.....

(ii) Why is it important to use the same enzyme? [1]

.....

.....

(iii) Name the type of enzyme used to join the cut fragment into the plasmid. [1]

.....

(c) Restriction enzymes are also used to cut up DNA during DNA fingerprinting/profiling. Labelled DNA probes are then used to identify the positions of the fragments on an electrophoresis gel. The fragments used are sections cut from introns rather than exons.

Explain why introns are more useful for genetic fingerprinting than exons. [2]

.....

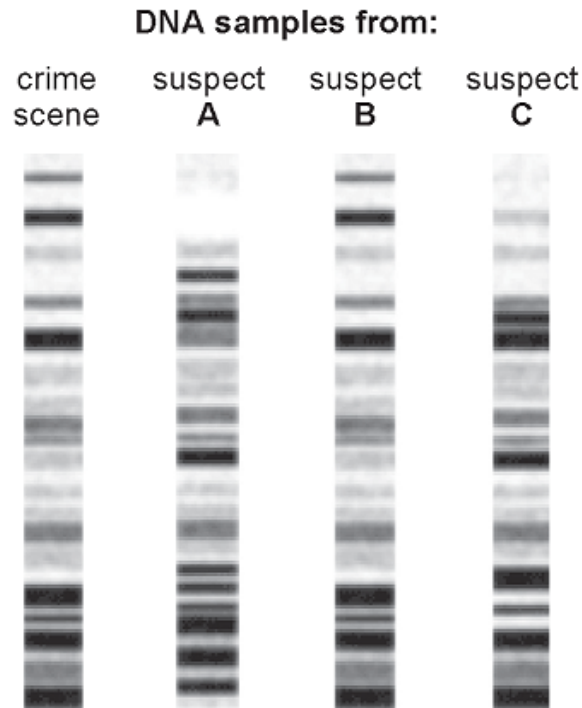
.....

.....

.....

.....

- (d) DNA profiles of a sample of DNA taken from a crime scene and samples prepared from blood of three suspects are shown below.



Give **two** features of the DNA profiles which would lead to the identification of suspect **B** as being present at the scene of the crime. [1]

- (e) (i) DNA at crime scenes is often found in very small quantities. Polymerase Chain Reaction (PCR) is a technique that enables the analysis of these small samples of DNA. State how PCR makes this possible. [1]

.....

.....

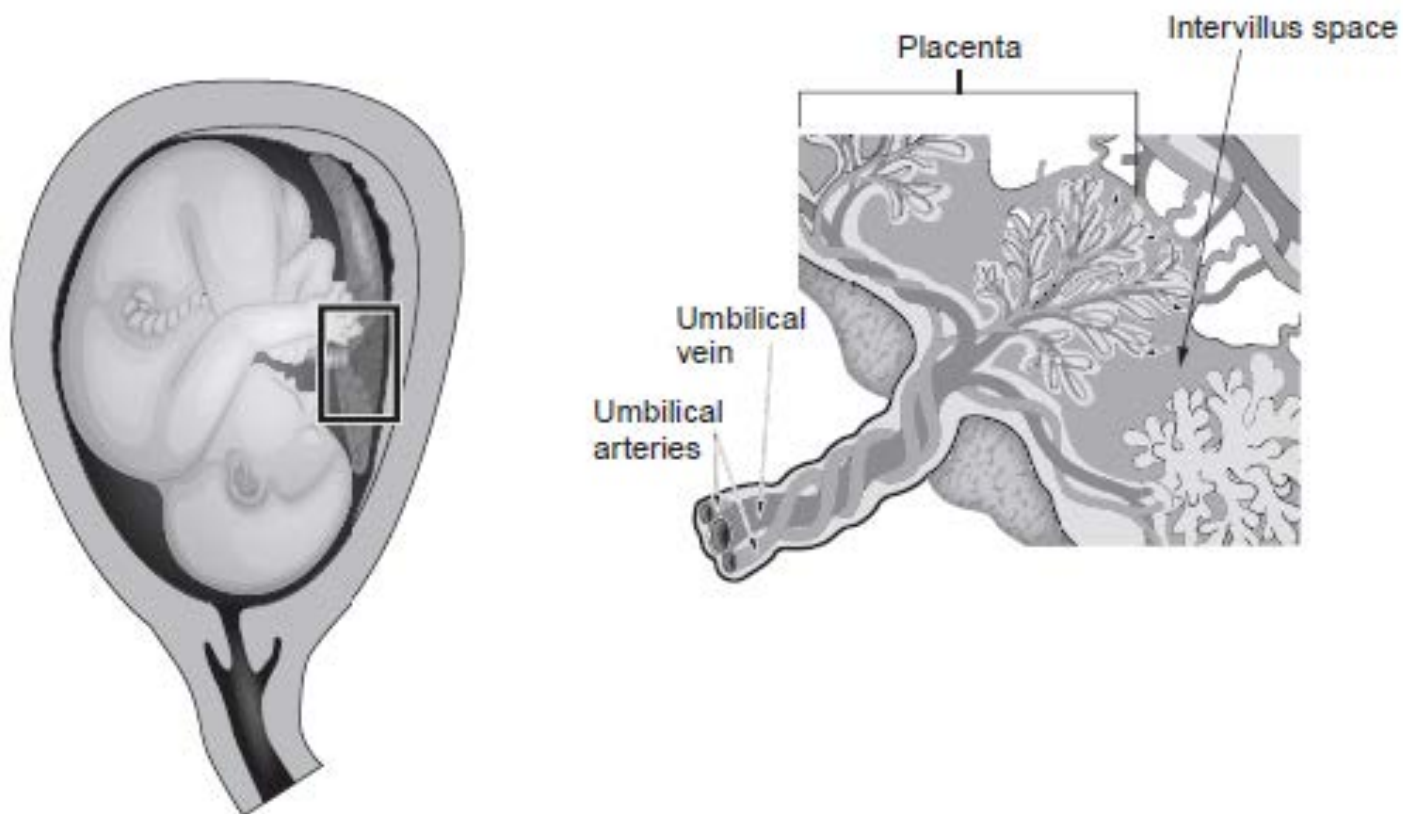
.....

- (ii) The enzyme used in the technique has an important function during interphase in both mitosis and meiosis.

Name: [2]

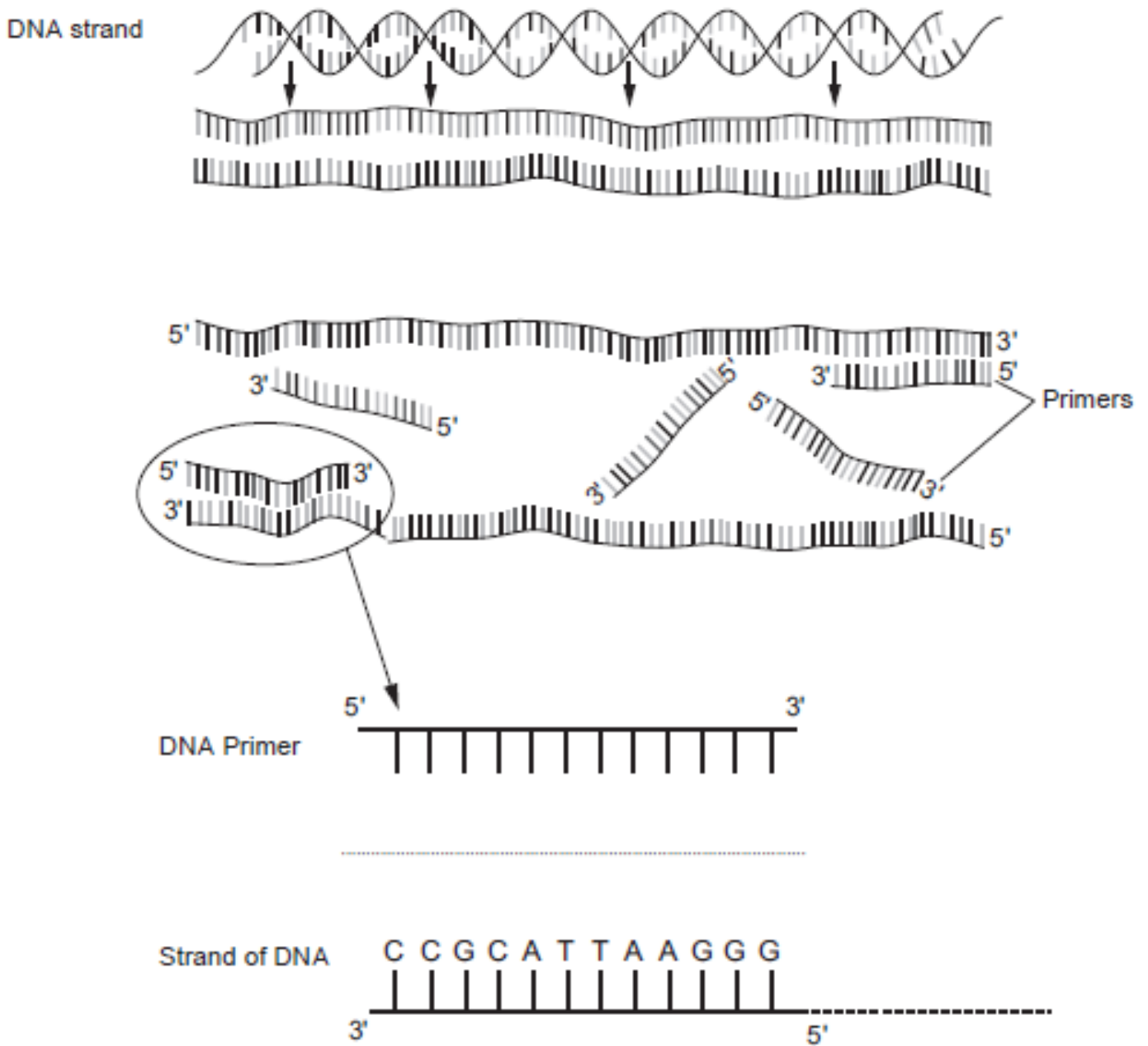
- I. the enzyme used;
- II. the enzyme's function in interphase.

3. The diagram below shows the structure of a human placenta.



- (a) During pregnancy, foetal cells die and release many different fragments of DNA into the mother's blood. A blood sample can be taken from the mother and foetal DNA fragments isolated and replicated (amplified) using the polymerase chain reaction (PCR). Many chromosomal abnormalities can be identified using this DNA, by a technique called non-invasive prenatal diagnosis.

Two different primers are needed in the polymerase chain reaction as shown in the diagram below.



- (i) On the diagram above complete the nucleotide sequence of the DNA primer complementary to the strand of DNA. [1]

(ii) Explain why two different DNA primers are required. [1]

.....

.....

.....

(iii) A sample of blood from a pregnant woman is taken. Primers specific to a gene on chromosome 21 are used to replicate it. Primers specific to another gene on a different chromosome are used at the same time. These act as a control. Both primers have fluorescent markers attached.

Suggest why it is important to use primers which are specific to a certain gene on each chromosome. [1]

.....

.....

(iv) After the PCR, the DNA fragments are separated using gel electrophoresis and the level of fluorescence for each gene is measured. The level of fluorescence corresponds to the quantity of that gene.
The quantity of both genes is expressed in the form of a ratio as shown below.

Quantity of gene from chromosome 21 : Quantity of gene from control chromosome.

Suggest why it is necessary to express the quantity of the genes as a ratio. [2]

.....

.....

.....

.....

4. The techniques of recombinant DNA technology and micro-propagation are used to produce Genetically Modified Crops. The following summary is adapted from an account given on the Food Standards Agency's web site [www.food.gov.uk]

1. A plant with the desired characteristic is identified - e.g. resistance to the herbicide 'Roundup'.
2. The specific gene that produces this characteristic is found in the plant's DNA and cut out.
3. To get the gene into the cells of the plant being modified, the gene needs to be attached to a carrier. A piece of bacterial DNA called a plasmid is joined to the gene to act as the carrier.
4. Once the gene is attached to the plasmid, a marker gene is also added to identify which plant cells take up the new gene.
5. The 'gene package' is put in a bacterium, which multiplies, to create many copies of the 'gene package'.
6. A copy of the 'gene package' is dried onto a gold or tungsten particle - and fired into a piece of tissue from the plant being modified. The particle carries the 'gene package' into the plant's cells.
7. The plant tissue is put into a selective growth medium so that only modified tissue develops into plants.

(a) Explain how different types of enzymes are used in stages 2 and 3 to produce the 'gene package'.

[4]

.....

.....

.....

.....

.....

.....

.....

(b) (i) Explain the advantage to farmers of having crops resistant to 'Roundup'.

[3]

(ii) Explain why environmentalists might have legitimate objections to using GM crops resistant to 'Roundup'.

[2]

5.

Currently, a million tons of wild fish are harvested from the oceans annually. Of these, 80% are used to feed fish reared in farms.

Fish do not make their own omega-3 fatty acids, they get these by eating algae. For farmed fish to be as nutritious as wild fish, they need to be fed a diet rich in omega-3 fatty acids. Algae are hard to culture on a large scale, so wild fish provide a more convenient source.

Scientists have identified and spliced genes from algae that code for producing high levels of omega-3 fatty acids into *Camelina* plants. The genetically modified *Camelina* plants now produce seeds that contain 26% omega-3 fatty acids, so are useful for fish farm feed.

- (a) Explain how named enzymes would be used to cut genes from algae and splice them into *Camelina* plants. [3]

.....

.....

.....

.....

.....

.....

.....

.....

.....

.....

.....

.....

.....

.....

.....

.....

.....

.....

.....

.....

.....

.....

.....

- (b) Explain why feeding genetically modified *Camelina* seed to farmed fish could benefit biodiversity. [1]

.....

.....

.....

6.

A recently developed technique in genetic engineering is called CRISPR. In this technique guide RNA is made which attaches to complementary sequences on DNA.

Nucleic acid molecules are constructed from sub-units called nucleotides.

(a) Describe **three** ways in which a DNA molecule differs from an RNA molecule. [2]

.....

.....

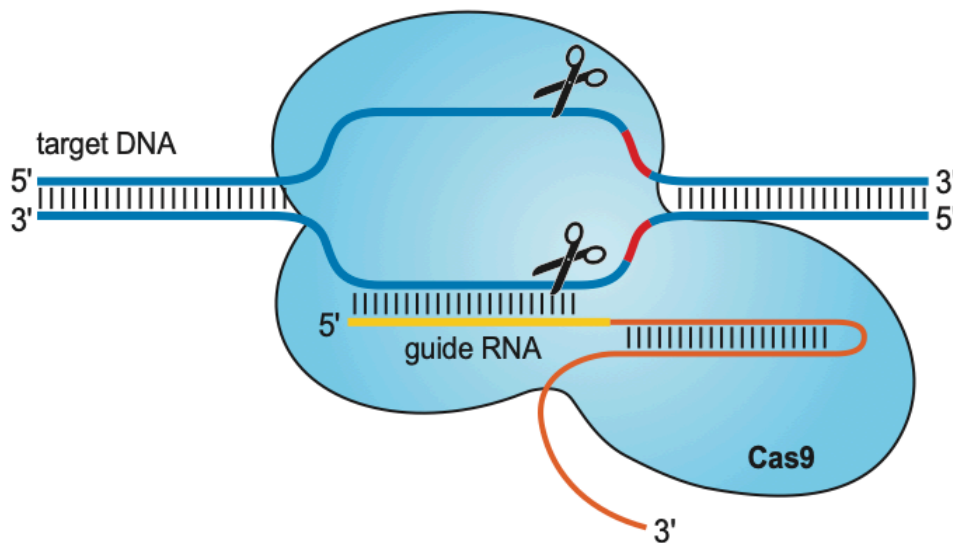
.....

.....

The CRISPR technique can be used to remove a target gene.
In this technique:

- Guide RNA is made.
- The guide RNA and Cas9 endonuclease combine to form a CRISPR/Cas9 complex.
- The complex is then inserted into a cell.
- The guide RNA attaches to the target gene as shown in Figure 2.1.

Figure 2.1



(b) Cas9 enzyme is a restriction endonuclease. State what is meant by a restriction endonuclease. [2]

.....

.....

.....

.....

Genetic engineers have discovered that by synthesising guide RNA with particular nucleotide sequences they can target any gene in any organism, if they know its nucleotide sequence. Using this technique it is possible to remove a target gene.

- (c) Scientists have identified a gene that is essential for fertility in mosquitoes of the genus *Anopheles*.

Suggest how the CRISPR technique could be used to modify mosquito eggs to produce sterile adult mosquitoes. [3]

.....

.....

.....

.....

.....

.....

.....

- (d) Explain how releasing these sterilised mosquitoes into the wild might benefit humankind and suggest an ethical reason for not doing so. [3]

.....

.....

.....

.....

.....

.....

.....

.....

.....

.....

.....

